

PRODUCT SPECIFICATION BROADLOOM

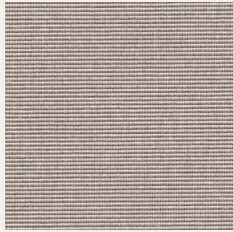
# ALFAR+

KASTHALL

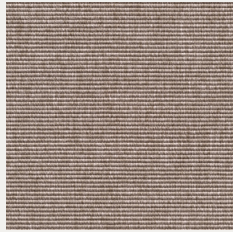
## Product Specifications

These woven bouclé-type wall-to-wall carpets have elegant ribbed patterns and a hard-wearing texture that is ideal for areas subject to heavy wear. Alfa R+ are available in 20 colors and are made from polyamide. Carpets can also be ordered with stitched edges, in any size or shape you require.

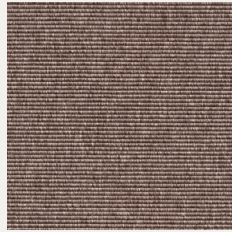
### COLORS:



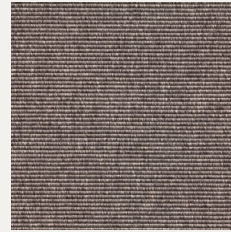
LIGHT BEIGE 220



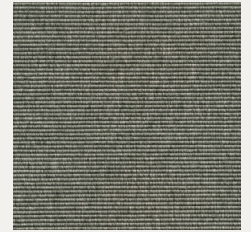
WARM BEIGE 240



MUD BEIGE 260



PALE BROWN 280



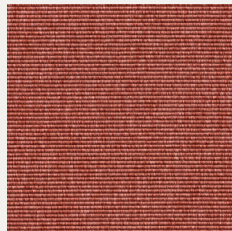
ICY GREEN 330



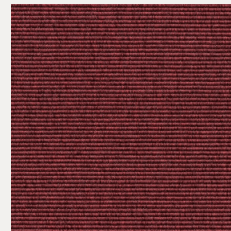
KHAKI GREEN 350



BRASS 620



PALE RED 420



DARK RED 490



WARM BROWN 130



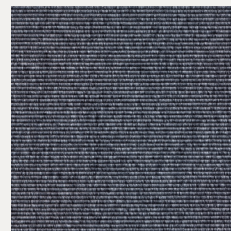
BROWN 150



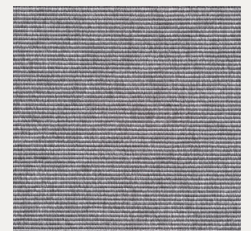
DARK BROWN 180



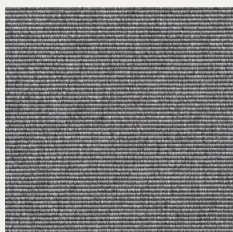
STEEL BLUE 520



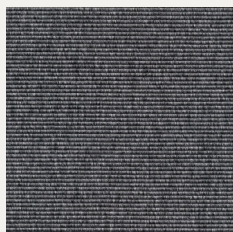
BLUE GREY 550



LIGHT GREY 720



COOL GREY 740



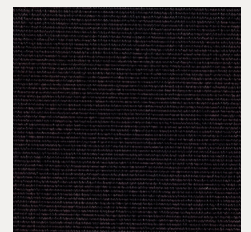
GREY 750



DARK GREY 770



COOL BLACK 800



BLACK 810

PRODUCT TYPE: Woven bouclé wall-to-wall carpet	PILE HEIGHT: approx. 2 mm
PILE MATERIAL: 100% Regenerated polyamide, antistatic	PILE WEIGHT: approx. 785 g/m <sup>2</sup>
BACKING MATERIAL: Pre-coat + textile secondary backing	TOTAL HEIGHT: approx. 4 mm
ROLL WIDTH: approx. 400 cm	TOTAL WEIGHT: approx. 2400 g/m <sup>2</sup>

## Performance markings and certificates

---



Wear classification: Class 33, Commercial heavy (EN 1307)



Castor chair suitability: Continuous use (EN 1307)



Suitability to use on stairs: Continuous use



Light fastness: >5



Dimensional stability: Yes



Fraying resistance: Yes



Accoustical sound absorption: aw 0,15



Accoustical impact noise reduction: approx. 17 dB



Slip resistance: DS (EN 14041)



Electrical behavior: Permanent antistatic (EN 14041)



Thermal resistance: Suitable for underfloor heating (EN 14041)



Reaction to fire: Cfl-s1 (EN 13501)



EPD nr: EPD-BEN-20210275-CCC1-EN



CE MARK REGULATION 1021-1CPR-006-2/16  
DoP: Product Group 1C - PA-WT

**BVB**

BVB: ID 152392 Accepted

**LEED®**

Fulfills the requirements for LEED

**BREEAM  
INT**

Fulfills the requirements for BREEAM International

**BREEAM  
SE 2017**

Fulfills the requirements for BREEAM-SE 2017

**INDOOR  
AIR**

Indoor Air Comfort Gold: ref IACG-42-03-09-2023

## Regular Care Advice

---

To further extend the lifetime of your carpet, it is important to start with preventive maintenance. Walk-off mats installed at all external doorways will significantly reduce tracked soil particles.

Kasthall recommends a regular maintenance so that the carpet may retain its appearance. If you have a light, single-colour carpet you will need to care for it more often than a darker, patterned carpet.

Regular vacuum cleaning is the best, most economical and environmentally friendly cleaning method. It is an effective and essential method for reducing the presence and build-up of loose soil particles in the carpet pile. The removal of such particles is a key process as embedded soil is abrasive and, over time, will have a negative impact on the visual appearance of the carpet and be a significant factor in premature wear.

Note that it is quite normal for a carpet with short fibers to lose individual fibers when used, these are excess fibres and it does not affect the general quality of the carpet. If you want to get rid of excess fibres faster, you can vacuum the carpet daily for an initial period. It is most efficient to vacuum the carpet one direction at a time.

## Deep Cleaning Advice

---

When the carpet does start to look soiled, a deep cleaning is required to revitalize the appearance of the pile. We recommend that the carpet is cleaned by a professional cleaner, using the extraction method on a flat surface. Always ensure the carpet is cleaned using a high quality cleaning agent, preferably one that is Woolsafe® recommended. Before re-using the carpet after any deep cleaning procedure, always ensure the carpet is completely dry and vacuum to avoid rapid re-soiling of the pile surface.

## Stain Removal Advice

---

Immediate attention to any spillage is essential to prevent the penetration of the stain into the carpet fibres. The longer the stain remains untreated, the more complicated it will be to remove and it may cause permanent stain setting.

For cleaning specific stains, never rub the surface to remove a stain or spilled substance, as this can irreversibly deform the surface. It is also not advisable to exert excessive pressure as you can mat down the carpet.

## Sustainability at Kasthall

---

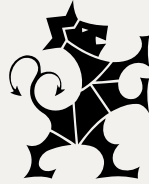
Sustainability runs deep in the history of Kasthall. More than 130 years ago, our dependence on the nature around us and the support of the local community in the small village of Kinna, Sweden, established a foundation of responsibility that continues to guide us today. From the careful selection of certified materials to the precision of our manufacturing process and the well-being of the workers in our supply chain, we strive to minimize our impact at every stage.

We use only the finest material and our local, production ensures every product is made with care, avoiding excess and minimizing waste. By making rugs and carpets that last for generations, we reduce the need for replacements and preserve natural resources.

We create quality rugs and carpets that are not only beautiful and durable but also responsibly made. For us, sustainability is never a finished task, and we are always looking for ways to further reduce our impact and better serve our planet, our community, and our customers.

Read more on [kasthall.com](https://www.kasthall.com)





KASTHALL

BEAUTIFUL RUGS AND CARPETS FOR A LIFE WELL LIVED.  
CREATED IN SWEDEN SINCE 1889.

Founded in Kinna, Sweden, Kasthall is a Swedish rug maker with a legacy spanning over 135 years. Kasthall offers design experiences characterized by quality, innovation, and the mastery of industrial craftsmanship, cultivated through generations. Extending from Stockholm to Tokyo, Kasthall's presence reflects its dedication to sophisticated design tailored for a global audience.

Visit [kasthall.com](https://kasthall.com) for more information.



Kasthall HQ Sweden | [customerservice@kasthall.com](mailto:customerservice@kasthall.com)

We reserve the right for possible typographical errors and slight color variations.