

PRODUCT SPECIFICATION

# BROSCHYR



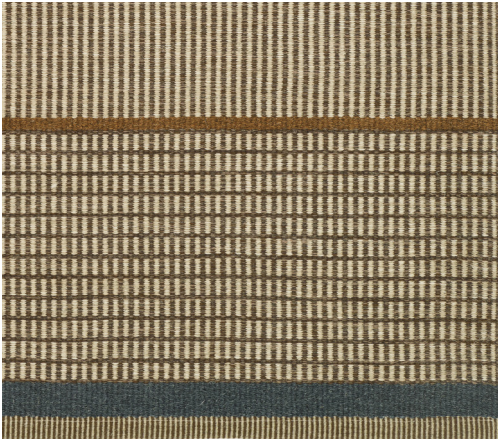
# KASTHALL

# BROSCHYR

GUNILLA LAGERHEM ULLBERG 1990 | 2025

---

A timeless Kasthall classic – as relevant today as ever. Designed in the 1990s, Broschyr has remained a constant in Kasthall’s collection – a testament to enduring design and craftsmanship. Created to inspire creativity and personal expression, it highlights how Kasthall’s signature patterns and colorways can be combined to create something truly unique. Over the years, Broschyr has become closely tied to Kasthall’s design heritage, continuing to embody the values and aesthetics that define the brand.



Chocolat Brown



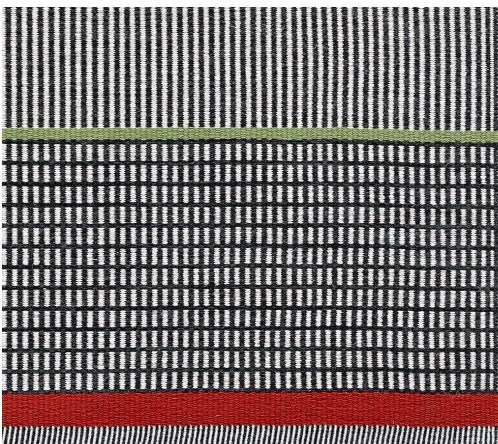
French Nougat



Washed Linen



Burlap Beige



Original

# BROSCHYR

GUNILLA LAGERHEM ULLBERG 1990 | 2025

---



Chocolat Brown

# BROSCHYR

GUNILLA LAGERHEM ULLBERG 1990 | 2025



French Nougat

# BROSCHYR

GUNILLA LAGERHEM ULLBERG 1990 | 2025

---



Washed Linen

# BROSCHYR

GUNILLA LAGERHEM ULLBERG 1990 | 2025

---

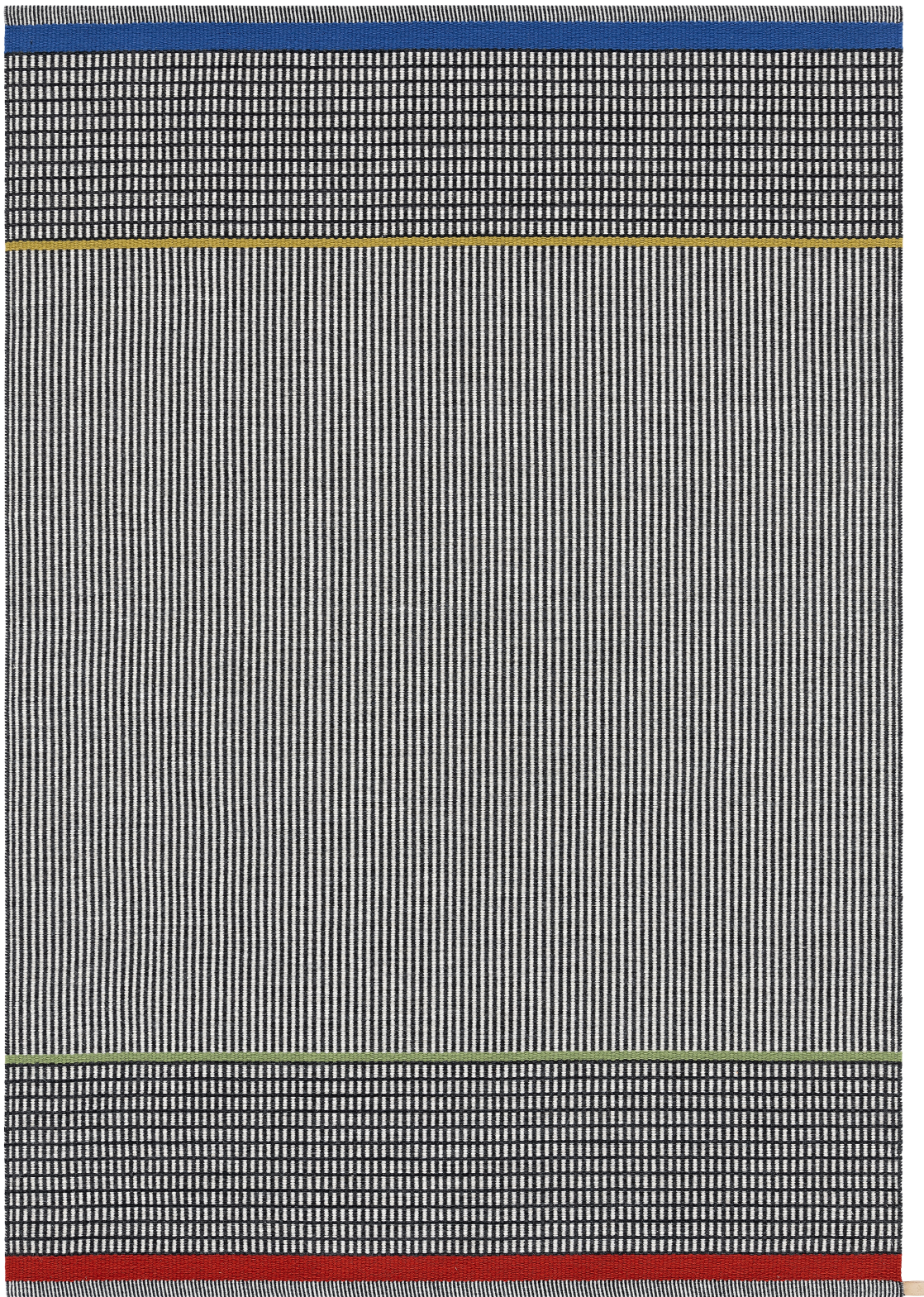


Burlap Beige

# BROSCHYR

GUNILLA LAGERHEM ULLBERG 1990 | 2025

---



Original

# BROSCHYR

GUNILLA LAGERHEM ULLBERG 1990 | 2025



## PRODUCT SPECIFICATIONS

Product type: Woven rug in wool

Weft material: 100% wool

Warp material: 100% linen

Total height: approx. 5 mm

Total weight: approx. 2200 g/m<sup>2</sup>



Suitable for Castor chair only  
with additional backing:  
(EN 1307) Intensive use



Thermal resistance:  
1,8 m<sup>2</sup> K/W (ISO 8302)



Fire classification:  
(EN 13501) Bfl-S1



Luxury class:  
(EN 1307) LC1

## DURABILITY



Wear classification:  
(EN 1307) Class 23  
Domestic Use



Wear classification:  
(EN 1307) Class 32  
Commercial Use

## CURATED SIZES (CM)

90x240

140x200

170x240

200x300

250x350

300x400

350x450

For customizations, please contact  
[customerservice@kasthall.com](mailto:customerservice@kasthall.com)



# THE ART OF PERFECT RUG PLACEMENT

Rugs are very often the visual anchor of a space, serving the purpose of bonding together other design cues and furnishings as well as complementing paintwork or wallpaper choices. They also help define the floor plan and guide the placement of furniture.

## BEFORE PLACING, HERE ARE SOME QUESTIONS YOU SHOULD CONSIDER

- How do people move around in the room?
- How many items of furniture are in the room and where will they be placed in relation to the rug?
- How are the room's acoustics and how will the rug affect noise insulation?
- How will light, both natural and artificial, affect perception of the rug's color and structure?

## WITH TABLE AND CHAIRS

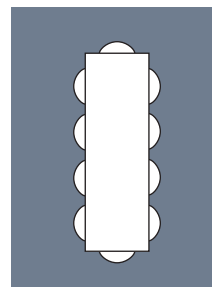
- Make sure the rug is of a scale that ensures all the chairs are still on the rug even when they are fully pulled out.
- To ensure this, we recommend a rug that is 50–60 cm larger than the table in both length and width.

## IN A BEDROOM

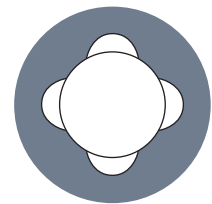
- When placing, focus on creating a unified look between bed and rug.
- Most of the rug should be under the bed, so we recommend choosing a rug that is at least 60 cm larger than the bed in both length and width.

## AS PART OF A SOFAGROUP

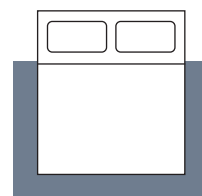
- Ensure your rug is at least as wide as the sofa.
- Create a unified aesthetic by ensuring part of the rug is under the sofa.
- If the group includes armchairs, choose a rug that is large enough to ensure all four legs of each armchair stay on the rug.



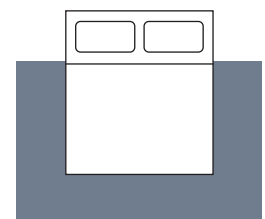
250x350 cm



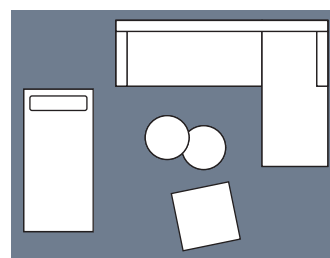
Ø 240 cm



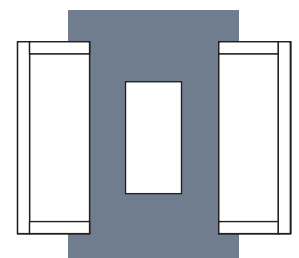
200x300 cm



250x350 cm



300x400 cm



200x300 cm

# THE SECRET TO A LONG-LASTING RUG

## Care tips that work

### REGULAR CARE ADVICE

- **LIGHT VS. DARK RUGS** – Light, single-color rugs require more frequent care than darker, patterned ones.
- **REGULAR VACUUMING** – The best, most economical, and eco-friendly cleaning method. For best results, vacuum in one direction at a time.
- **BRUSH YOUR TUFTED RUG** – Regular brushing helps lift flattened pile, restore the rug's plushness, and prevent matting.
- **AVOID BEATING OR SHAKING** – This can damage the fibers.
- **SHEDDING IS NORMAL** – Excess fibers will naturally shed over time and do not affect quality.
- **SPEED UP SHEDDING REDUCTION** – Vacuum daily for a short period.
- **LINEN HAND-TUFTED RUGS** – Sensitive to water – use minimal water when removing stains.

### DEEP CLEANING ADVICE

For the best care, we recommend professional cleaning using the extraction method on a flat surface. Keep these key points in mind:

- **WATER USAGE** – The amount and temperature depend on the rug's material and pile length.
- **PROPER DRYING** – Ensure good ventilation to prevent moisture buildup.
- **SHRINKAGE** – Expect 2% shrinkage after cleaning.
- **DO NOT MACHINE WASH OR DRY CLEAN** – These methods are not suitable for Kasthall rugs.

### OTHER INFORMATION

Depending on the materials used and the rug making process, dimensions may vary by up to +/-2% so please state maximum or minimum dimensions when placing your order.

Note that all rugs from Kasthall are made from natural materials. Variations in color and texture can therefore arise between batches of yarn and dye baths.

For more care tips and our stain guide, visit [kasthall.com](http://kasthall.com).



# SUSTAINABILITY IN OUR HEART SINCE 1889

Sustainability and social responsibility have been woven into Kasthall's identity from the beginning.

## MAKING SUSTAINABLE CHOICES

Sustainability runs deep in the history of Kasthall. More than 130 years ago, our dependence on the nature around us and the support of the local community in the small village of Kinna, Sweden, established a foundation of responsibility that continues to guide us today. From the careful selection of certified raw materials to the precision of our manufacturing process and the well-being of the workers in our supply chain, we strive to minimize our impact at every stage.

We use only the finest linen and wool and our local production ensures every piece is made with care, avoiding excess and minimizing waste. By making rugs that last for generations, we reduce the need for replacements and preserve natural resources.

We create luxury rugs that are not only beautiful and durable but also responsibly made. For us, sustainability is never a finished task, and we are always looking for ways to further reduce our impact and better serve our planet, our community, and our customers.

Read more about our sustainability work here:  
<https://www.kasthall.com/catalogs-documents>

## SECOND LIFE

We wish to contribute to a world that consumes less and values quality products more, and we want to make it easier for our customers to increase the lifetime of Kasthall rugs. We will therefore strengthen our consumer communication on the impact of our products and provide guidance on what to do with a Kasthall rug if they no longer wish to keep it themselves. In our home market Sweden, Kasthall rugs are sought after items on auctions and second-hand interior platforms.



**BEAUTIFUL RUGS AND CARPETS FOR A LIFE WELL LIVED.  
CREATED IN SWEDEN SINCE 1889.**

Founded in Kinna, Sweden, Kasthall is a Swedish rug maker with a legacy spanning over 135 years. Kasthall offers design experiences characterized by quality, innovation, and the mastery of industrial craftsmanship, cultivated through generations. Extending from Stockholm to Tokyo, Kasthall's presence reflects its dedication to sophisticated design tailored for a global audience.

Visit [kasthall.com](https://kasthall.com) for more information.



**KASTHALL**

Kasthall HQ Sweden | [customerservice@kasthall.com](mailto:customerservice@kasthall.com)  
We reserve the right for possible typographical errors and slight color variations.