

PRODUCT SPECIFICATION BROADLOOM

MARBLE



KASTHALL

Product Specifications

A wilton woven wall-to-wall carpet in 100% wool Marble has a boucle surface in harmonious and elegant yet rich Kasthall typical sophisticated color ways in mélanges that creates depth.

COLORS:



ALABASTER 8361



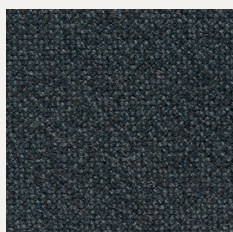
LIMESTONE 8362



MALACHITE 8365



ONYX 8364



BLUE SLATE 8363



PRODUCT TYPE: Wilton woven bouclé wall-to-wall carpet

PILE HEIGHT: approx. 6 mm

PILE MATERIAL: 100% wool

PILE WEIGHT: approx. 1440 g/m²

BACKING MATERIAL: Cotton & Jute + Syntetic latex

TOTAL HEIGHT: approx. 8 mm

ROLL WIDTH: approx. 400 cm

TOTAL WEIGHT: approx. 2960 g/m²

Performance markings and certificates



Wear classification: Class 23, Domestic heavy (EN 1307)



Wear classification: Class 33, Commercial heavy (EN 1307)



Castor chair suitability: Continuous use (EN 1307)



Accoustical impact noise reduction: approx. 43 dB



Slip resistance: DS (EN 14041)



Thermal resistance: Suitable for underfloor heating (EN 14041)



Reaction to fire: Bfl-s1 (EN 13501)



CE MARK REGULATION (EU), Wilton 100% wool EN1307:tipo2 20190128)

BVB

BVB: ID 111263 Recommended

**MILJÖBYGGNAD
GULD**

Fulfills the requirements for Miljöbyggnad Guld

LEED®

Fulfills the requirements for LEED certified budings (EQC 4.3)

**BREEAM
SE 2017**

Fulfills the requirements for BREEAM SE 2017

**BREEAM
NOR**

Fulfills the requirements for BREEAM NOR

**INDOOR
AIR**

Fulfills the requirements for Indoor Air Comfort Gold:
REF 392_2018_00069801_A_EN_02

CDPH

Fulfills the requirements for CDPH:
REF 392_2018_00069801_H_EN_02

Regular Care Advice

To further extend the lifetime of your carpet, it is important to start with preventive maintenance. Walk-off mats installed at all external doorways will significantly reduce tracked soil particles.

Kasthall recommends a regular maintenance so that the carpet may retain its appearance. If you have a light, single-colour carpet you will need to care for it more often than a darker, patterned carpet.

Regular vacuum cleaning is the best, most economical and environmentally friendly cleaning method. It is an effective and essential method for reducing the presence and build-up of loose soil particles in the carpet pile. The removal of such particles is a key process as embedded soil is abrasive and, over time, will have a negative impact on the visual appearance of the carpet and be a significant factor in premature wear.

Note that it is quite normal for a carpet with short fibers to lose individual fibers when used, these are excess fibres and it does not affect the general quality of the carpet. If you want to get rid of excess fibres faster, you can vacuum the carpet daily for an initial period. It is most efficient to vacuum the carpet one direction at a time.

Deep Cleaning Advice

When the carpet does start to look soiled, a deep cleaning is required to revitalize the appearance of the pile. We recommend that the carpet is cleaned by a professional cleaner, using the extraction method on a flat surface. Always ensure the carpet is cleaned using a high quality cleaning agent, preferably one that is Woolsafe® recommended. Before re-using the carpet after any deep cleaning procedure, always ensure the carpet is completely dry and vacuum to avoid rapid re-soiling of the pile surface.

Stain Removal Advice

Immediate attention to any spillage is essential to prevent the penetration of the stain into the carpet fibres. The longer the stain remains untreated, the more complicated it will be to remove and it may cause permanent stain setting.

For cleaning specific stains, never rub the surface to remove a stain or spilled substance, as this can irreversibly deform the surface. It is also not advisable to exert excessive pressure as you can mat down the carpet.

Sustainability at Kasthall

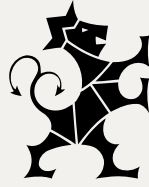
Sustainability runs deep in the history of Kasthall. More than 130 years ago, our dependence on the nature around us and the support of the local community in the small village of Kinna, Sweden, established a foundation of responsibility that continues to guide us today. From the careful selection of certified materials to the precision of our manufacturing process and the well-being of the workers in our supply chain, we strive to minimize our impact at every stage.

We use only the finest material and our local, production ensures every product is made with care, avoiding excess and minimizing waste. By making rugs and carpets that last for generations, we reduce the need for replacements and preserve natural resources.

We create quality rugs and carpets that are not only beautiful and durable but also responsibly made. For us, sustainability is never a finished task, and we are always looking for ways to further reduce our impact and better serve our planet, our community, and our customers.

Read more on kasthall.com





KASTHALL

BEAUTIFUL RUGS AND CARPETS FOR A LIFE WELL LIVED.
CREATED IN SWEDEN SINCE 1889.

Founded in Kinna, Sweden, Kasthall is a Swedish rug maker with a legacy spanning over 135 years. Kasthall offers design experiences characterized by quality, innovation, and the mastery of industrial craftsmanship, cultivated through generations. Extending from Stockholm to Tokyo, Kasthall's presence reflects its dedication to sophisticated design tailored for a global audience.

Visit kasthall.com for more information.



Kasthall HQ Sweden | customerservice@kasthall.com

We reserve the right for possible typographical errors and slight color variations.