







PRODUCT SPECIFICATION

VICHY

KASTHALL

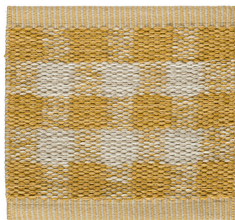
PRODUCT SPECIFICATIONS

PRODUCT TYPE: Woven rug in pure wool	TOTAL THICKNESS: approx. 7 mm
WEFT MATERIAL: 100% wool	TOTAL WEIGHT: approx. 2310 g/m ²
WARP MATERIAL: 100% linen	 Wear classification: (EN 14215) Class 22 Domestic general  Acoustics properties: Sound insulation approx. 24 dB  Acoustics properties: Sound absorption α_w 0,15  Suitable for Castor chair only with additional backing: (EN 1307) Occasional use  Luxury class: (EN 1307) LC 1  Reaction to fire classification: (EN 13501) CF-s1
SUGGESTED SIZES (CM): 85x240, 135x200, 165x240, 195x300, 240x350, 290x400, 340x450 CUSTOM MADE SIZES: Choose width between 70–600 cm and any length	

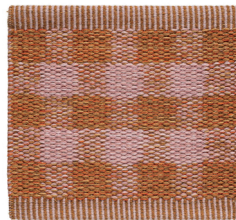
COLORS



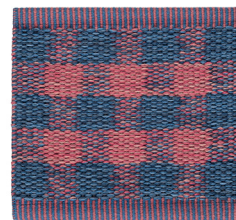
VANILLA COCONUT



QUINCE



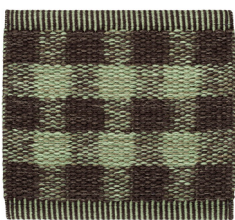
MANGO PEACH



RASPBERRY BLUE



CASSIS



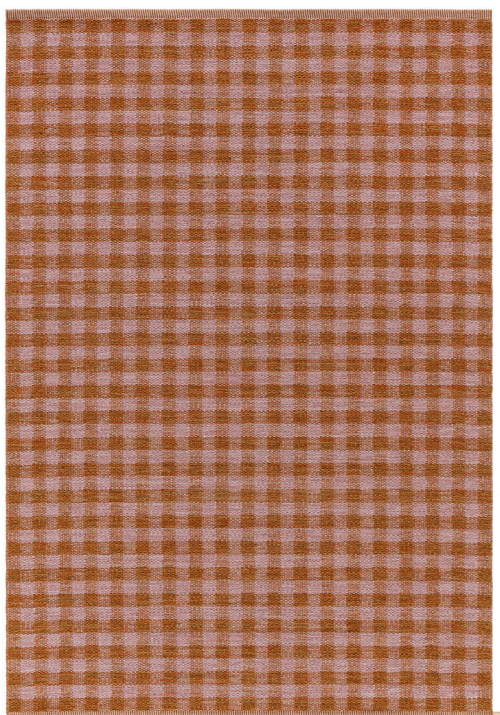
PISTACHIO



MINT CHOCOLATE



SLOE BERRY



Vichy is a woven rug in pure wool that captures the essence of playfulness and sophistication through the reimagined checkered Vichy pattern, also known as Gingham. The collection includes eight color options ranging from neutrals to bolder and more expressive hues. Each rug is a brushstroke on the canvas of Kasthall's rich heritage, showcasing the narrative of craftsmanship and dedication at the Kasthall Factory. Vichy is a timeless yet contemporary celebration of the classic checkered pattern, perfect for any modern living space.

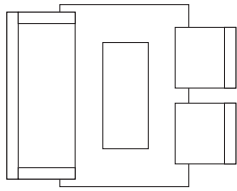
CHOOSING A RUG

VICHY COLLECTION
DESIGNED BY
KASTHALL DESIGN STUDIO

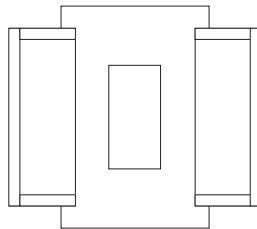
Choose the characteristics of the rug, its colour and design to suit the space in which it will be laid. If it is to be laid in a hall, for example, you may choose a type of rug that is more resistant to wear, and a colour that is a little darker and dirt-tolerant. Use a rug as a means of bringing together the rest of the interior. Decide whether you want to place a sofa on the rug or at its edge. If a rug is to be placed underneath a dining table, add at least 60 cm all round the table to allow space for pulling out the chairs. Hand tufted rugs are suitable for creating cosy environments with warm acoustics. Depending on the quality, hand tufted rugs can work equally well in domestic settings and public spaces. Ideal for use in living rooms, bedrooms and in lounge environments and hotel rooms.

SIZE GUIDE RUGS

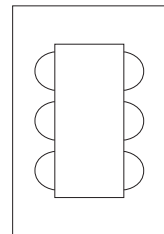
170x240 Couch 220x90, Coffee-table 140x60, Armchair 80x80



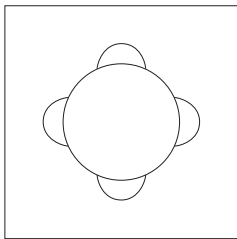
170x240 Couch 220x90, Coffee-table 140x60, Armchair 80x80



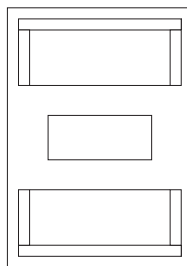
200x300 Table 160, Chair 50



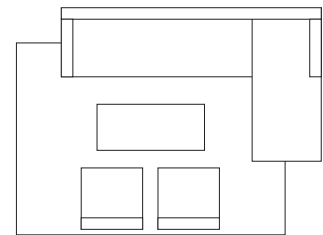
240x240 Table 120 Ø, Chair 50



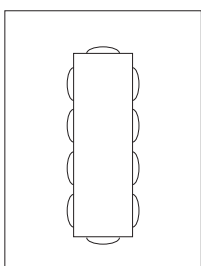
250x350 Couch 220x90, Coffeetable 140x60



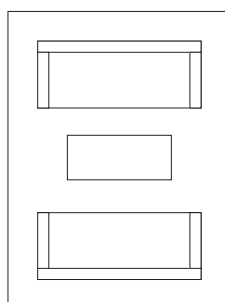
250x350 Couch 350x200, seat 90, Coffee-table 140x60 Armchair 80x80



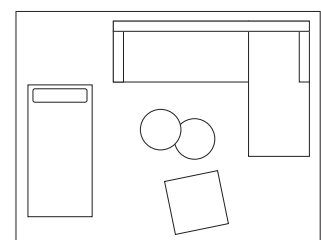
300x400 Table 90x280, Chair 50



250x350 Couch 220x90, Coffeetable 140x60



350x450 Couch 300x200, Seat 90, Daybed 195x95 Coffeetable 60 Ø, Ottoman 80x80



CARE AND CLEANING

VICHY COLLECTION
DESIGNED BY
KASTHALL DESIGN STUDIO

REGULAR CARE ADVICE

To further extend the lifetime of your rug, Kasthall recommends a regular maintenance so that the rug may retain its shape and appearance. If you have a light, single-colour rug you will need to care for it more often than a darker, patterned rug. Thorough vacuum cleaning is the best, most economical and environmentally friendly cleaning method. Beating or shaking a rug may damage the fibers. Note that it is quite normal for the rug to lose individual fibers when used, these are excess fibres and it does not affect the general quality of the rug. If you want to get rid of excess fibres faster, you can vacuum the rug daily for an initial period. It is most efficient to vacuum the rug one direction at a time. Remember that hand tufted rugs in linen are sensitive to water, so take particular care with the amount of water you use when removing stains.

DEEP CLEANING ADVICE

We recommend that the rug is cleaned by a professional cleaner, using the extraction method on a flat surface. The quantity and temperature of the water will depend on the material and pile length. Good ventilation during the drying process is essential. Shrinkage will be about 3-5%. Kasthall's rugs are not to be machine-washed or dry-cleaned. At www.kasthall.com you can read more about our materials, how to look after your rug and our stain guide.

OTHER INFORMATION

Depending on the materials used and the rug-making process, dimensions may vary by up to 2% so please state maximum or minimum dimensions when placing your order.

Note that all rugs from Kasthall are made from natural materials. Variations in colour and texture can therefore arise between batches of yarn and dye baths.



SUSTAINABILITY AT KASTHALL

VICHY COLLECTION
DESIGNED BY
KASTHALL DESIGN STUDIO

Sustainability runs deep in the history of Kasthall. More than 130 years ago, our dependence on the nature around us and the support of the local community in the small village of Kinna, Sweden, established a foundation of responsibility that continues to guide us today. From the careful selection of certified raw materials to the precision of our manufacturing process and the well-being of the workers in our supply chain, we strive to minimize our impact at every stage.

We use only the finest linen and wool and our local, made-to-order production ensures every piece is made with care, avoiding excess and minimizing waste. By making rugs that last for generations, we reduce the need for replacements and preserve natural resources.

We create luxury rugs that are not only beautiful and durable but also responsibly made. For us, sustainability is never a finished task, and we are always looking for ways to further reduce our impact and better serve our planet, our community, and our customers. Read more on kasthall.com

SUSTAINABLE FIBRES:

100% certified RWS (Responsible Wool Standard) sourced in New Zealand.
100% certified Masters of linen sourced in France.

DURABILITY:

Abrasion resistance
Pilling
Seam slippage
Lightfastness
10 years guarantee

SUSTAINABLE SUPPLY CHAIN:

Fibres: Wool sourced from trusted suppliers in New Zealand.
Linen sourced from (Linifico) in France.
Yarn: Wool from XXX in Italy. Linen from XXX in Germany.
Coloring: All yarns colored in local dye house in Kinna.
Weaving: All rugs woven in Kasthalls own factory in Kinna, Sweden. ISO
???. 100% non-fossil low emission electricity.

SUSTAINABLE PRODUCTION PROCESSES:

Wool: Does not contain PVC (polyvinyl chloride). Not mootproofed.
Linen: Harvested with sun instead of chemicals.
Coloring: We only use dyes that comply with AFIRM requirements, including AZO and heavy metal dye restrictions.
Treatments and Finishes: No flame retardants OR We do not use halogen-based flame retardants (inc. brominated and chlorinated).
No use of PFCs (perfluorinated compounds).

ENVIRONMENTAL BUILDING PROGRAMS:

The XXXXX has certifications and documentation that can support green building projects with credit points to achieve targeted certification level. Standards supported / Complied with:



EMISSIONS TO AIR (VOC PROGRAMS):

Test results: TEST XXXX. VOC: XXX. List key KPIs from test.
Standards supported / Complied with:



KASTHALL HQ

Fritslavägen 42 | 511 57 Kinna, Sweden | Phone +46(0)320 205 900 | info@kasthall.com

For the latest updates of our collection, please visit www.kasthall.com

All the designs shown here are protected under law. Kasthall have the property rights and distribution rights worldwide. Copying will be prosecuted.

